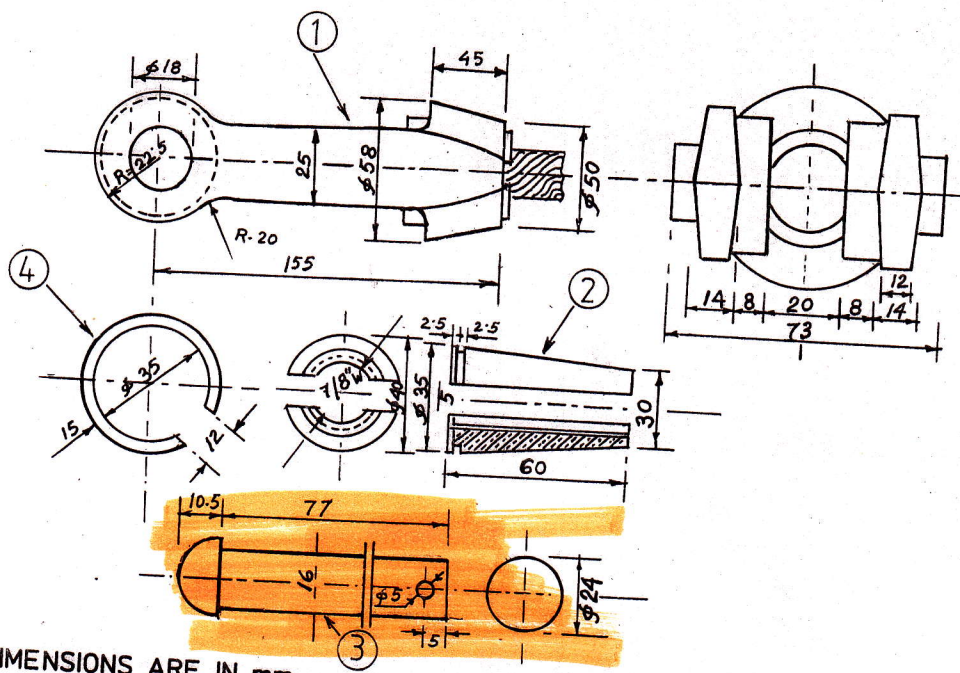


END FITTING WITH WEDGES FOR 37/0.104" COPPER CATENARY (ITEM-22)

Pt. No.	DESCRIPTION	MATERIAL	QTY.
1	END FITTING	GUN METAL	1
2	THREADED WEDGES	--DO--	2
3	PIN WITH COTTER PIN & FLAT WASHER	GALV. STEEL	1
4	CIRCLIP	--DO--	1



NOTE :- ALL DIMENSIONS ARE IN mm.
 MATERIAL:- GUN METAL - IS 10742 OF 1983 OR LATEST EDITION (GRADE-III)
 GALVANIZED STEEL, MS ASPER IS 226 OF 1984 OR LATEST, GALVANIZED.

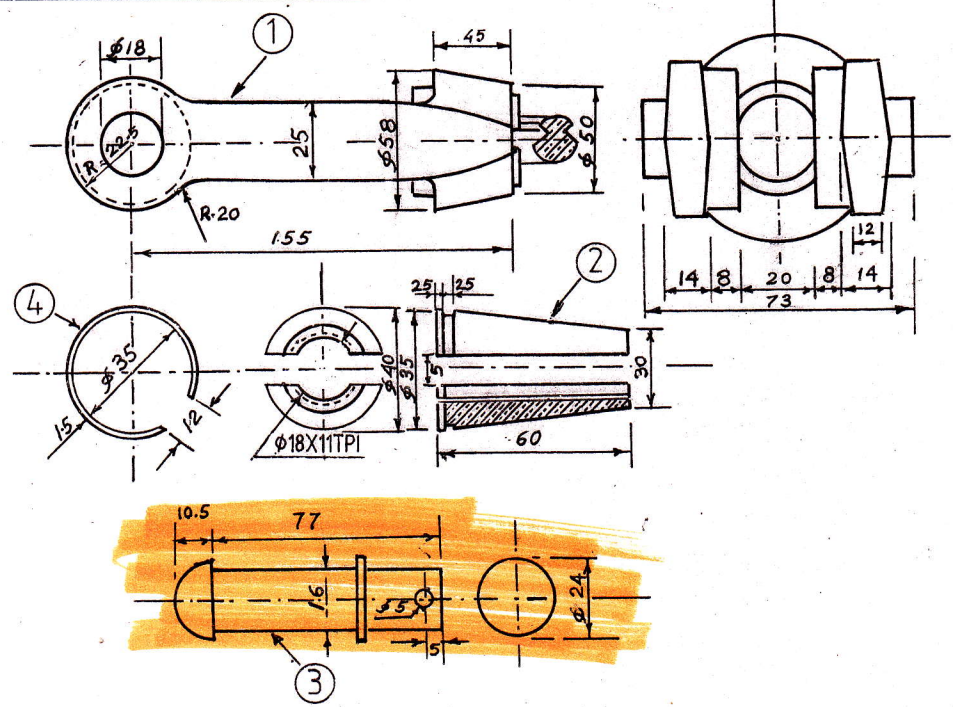
MD
 20.7.07
 AEE/TR-D/C/HWH

SAE (I)'S DRG. NO. 26423 a

REF:- CEE/ER'S DRG. NO. ET/13/3/23

END FITTING WITH WEDGES FOR 0.25sq.in CONTACT WIRE (ITEM-21)

PART No.	DESCRIPTION	MATERIAL	QTY.
1	END FITTING	GUN METAL	1
2	THREADED WEDGES	--DO--	2
3	PIN WITH COTTER PIN & FLAT WASHER	GALV. STEEL	1
4	CIRCLIP	--DO--	1



NOTE:- ALL DIMENSIONS ARE IN mm.
 MATERIAL:- GUN METAL IS 10742 OF 1983 OR LATEST EDITION (GRADE-III).
 GALVANIZED STEEL-MS AS PER IS 226 OF 1984 OR LATEST, GALVANIZED.

MD
 26.7.06
 AEE/TR-D/C/HWH

SAE (I)'S DRG. NO. 26424

REF:- CEE/ER'S DRG. NO. ET/13/3/22