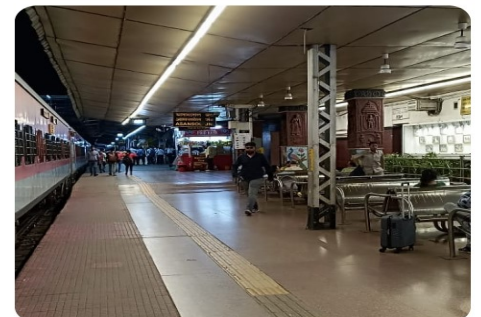
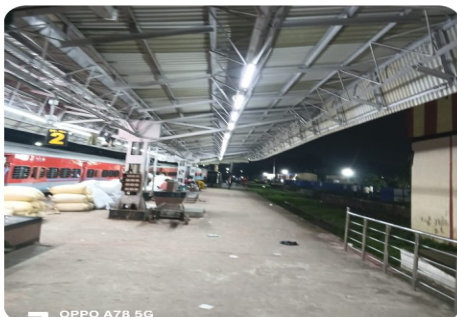
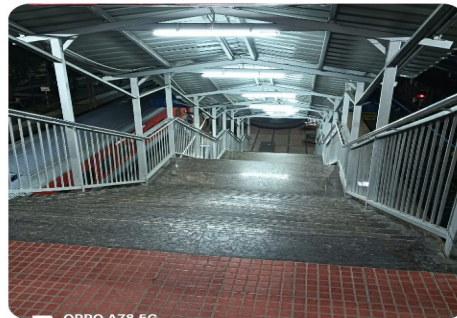
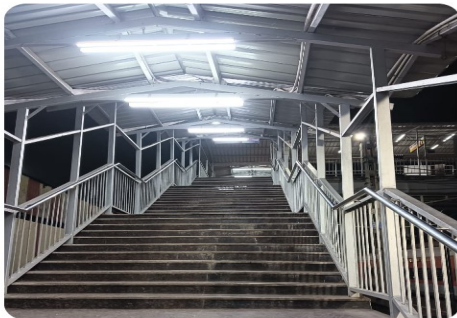




ILLUMINATION AT DIVISIONAL RAILWAY MANAGER'S OFFICE / ASANSOL



INDEPEDENCE DAY ILLUMINATION OF ASANSOL STATION



ILLUMINATION AT PLATFORMS OF ASANSOL STATION



NEW DIVISIONAL CONTROL OFFICE/ASANSOL

PASSENGER AMENITIES ITEMS

24 nos of lifts are installed at different railway stations and service buildings across the division.

SL NO.	LOCATION	QUNATITY (NOS.)
01.	ASN	02
02.	MDP	03
03.	JSME	01
04	DGR	02
05.	RNG	02
06.	SIURI	02
07.	PAW	02
08.	PAN	02
09.	BRR	02
10.	JMT	01
11.	CRJ	01
12.	DUMKA	02
13.	DRM BUILDING	01
14.	DRH ASANSOL	01



SIURI



RANIGANJ



PANAGARH



MADHUPUR



CHITTARANJAN



BARAKAR



DURGAPUR

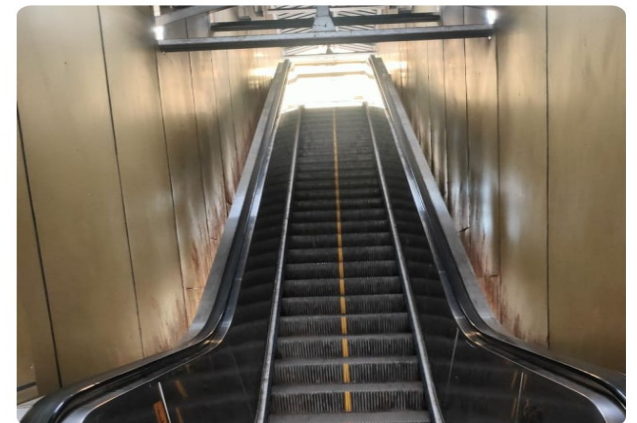
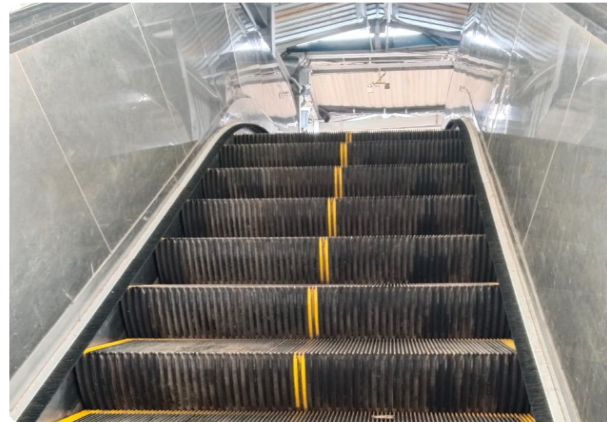


ASANSOL

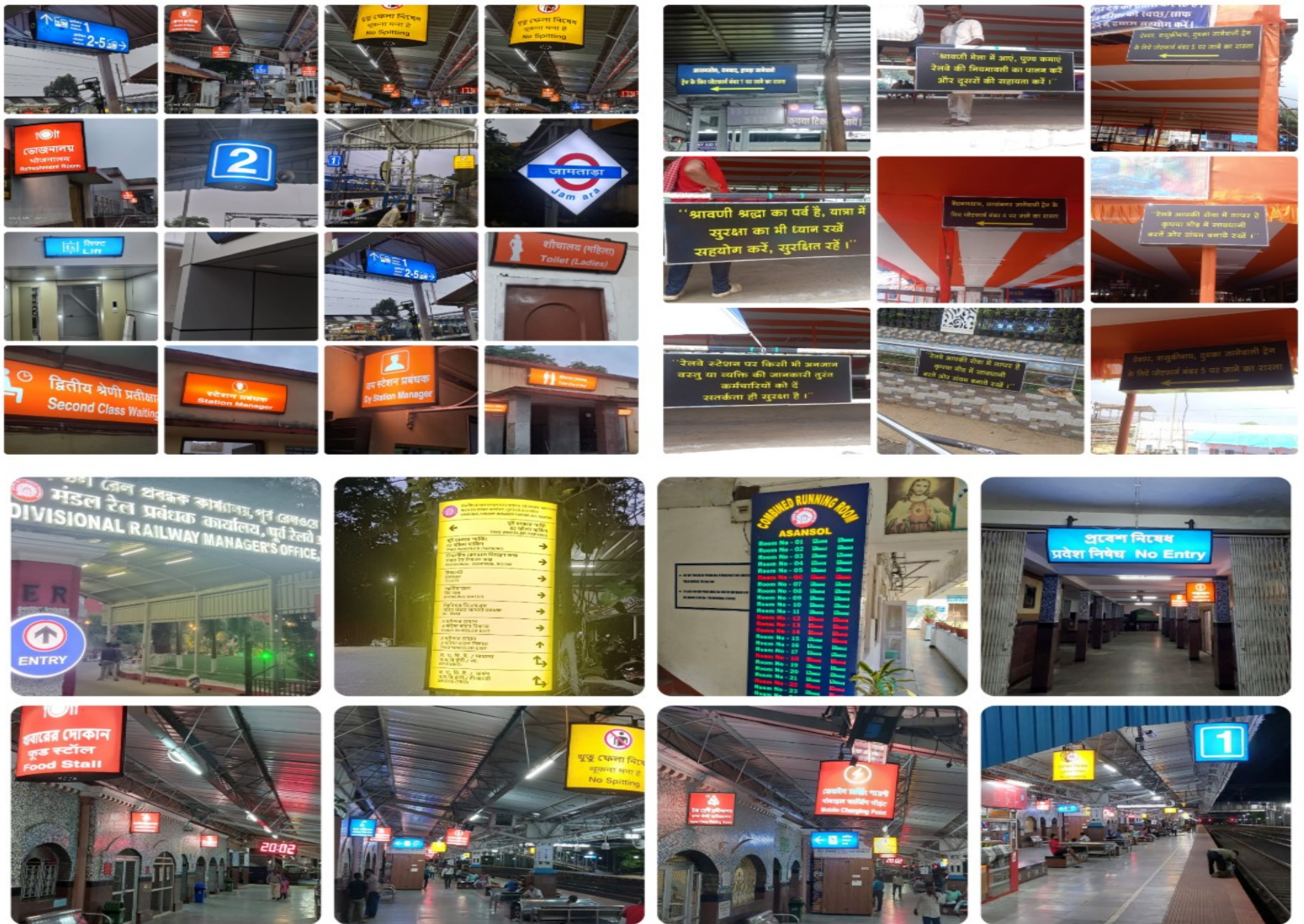


JASIDIH

LIFTS AT ASANSOL



ESCALATORS AT VARIOUS STATIONS



SIGNAGE BOARDS FOR BETTER PASSENGER AMINITIES



BSKH PF No. 1



DEOGHAR AT CREW LOBBY



DEOGHAR AT PF No. 1



JSME PF NO. 1 KLK END

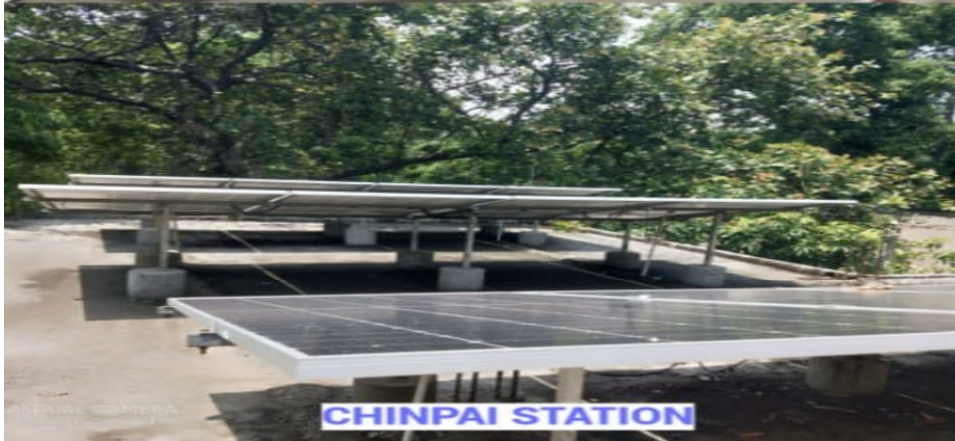


JSME PF NO. 1 NEAR RPF OFFICE



BSKH PF NO.1

WATER COOLERS AT DIFFERENT STATIONS



GREEN ENERGY INITIATIVES -SOLAR PANELS



SAFETY SEMINARS

To enhance awareness about safety, the Electrical General Department/ASN regularly organizes “**MICRO SAFETY SEMINARS**” for field staff. These sessions aim to improve the overall quality of work by promoting best practices, ensuring adherence to safety protocols, and fostering a culture of safety and accountability. The initiative not only safeguards field personnel but also contributes to the safety and satisfaction of end users.



INTRODUCTION OF FUEL BROWSER FOR QUICK REFUELLING

Due to the absence of HSD oil storage facilities at the Coaching Complexes in Asansol and Madhupur, power cars of Mail/Express trains were previously sent to RCD/UDL for fuelling—resulting in operational delays and higher costs.

To overcome this, the Elect/Genl/ASN Department introduced the use of a **fuel browser** for on-site fuelling at the Coaching Complex. This interim solution has eliminated the need to move power cars to RCD/UDL, saving both time and revenue.

This initiative has led to a cost saving of **₹1,01,915.96 per trip**, marking a significant achievement in improving operational efficiency and resource optimization for Indian Railways.

TRAIN LIGHTING AND AC MAINTENANCE WORK POSITION

Position of Primary Train along with Coach Composition at Asansol Division

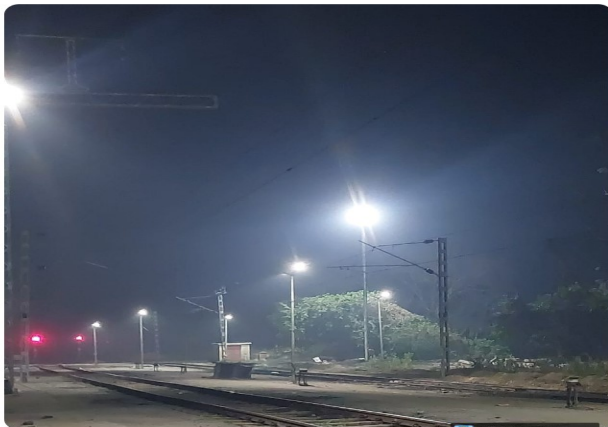
Primary

ASANSOL								
SL	Train No.	Train Name	Days of Runs	Nos. of Rakes	Capacity of Rake	Total		
						TL	AC	
1	12376/75	JSME –TBM (Weekly)	Every Wed	01 (LHB)	AC3T-06, AC2T-02, Power Car-01, Pantry Car -01, LWSCN -07, LWS-04, LSLRD -01	12	10	
2	12361/62	ASN-CSMT (Weekly)	Every Sun	01 (LHB)	AC3T-06, AC2T-02, Power Car-01, Pantry Car -01, LWSCN -07, LWS-04, LSLRD -01	12	10	
3	22306/05	JSME-SMVT (Weekly)	Every Fri	01 (LHB)	AC3T-08, AC2T-04, AC1T-01, Power Car-02, Pantry Car -01, LWSCN -02, LWS-04	06	16	
4	13507/08	ASN-GKP	Every Fri	01 (ICF)	AC3T-04, AC2T-01, WGSCN-11, GS-06, SLR-02	19	05	
	13509/10	ASN-GD	Every Tue					
5	12384/83	ASN-SDAH (Intercity Exp.)	Daily (Except Sun)	01 (ICF)	GS-09, WGSCZ-02, WGACCN- 01, SLR-02	13	01	
6	22330/29	ASN-HLZ	Daily (Except Sun)	01 (ICF)	SLR-02, WGSCZ- 2,GS-10	14	--	
	13506/05	ASN-DIGHA	Every Sun					
7	13512/11	ASN-TATA (Tri Weekly)	Sun, Tue, Fri	01 (ICF)	SLR-02, WGSCZ-1, WGSCZJ-1,GS- 10	14	--	
8	13513/14	ASN-HTE	Mon, Wed, Thus, Sat, Sun	01 (ICF)	WGSCZ-03, GSLRD-02, WGSCZAC-02, GS-06	11	02	
9	Spare (may change)				TL coaches SG+LHB = 22+12= 34 nos AC Coaches SG+LHB = 04+22= 26 nos	34	26	
10	IOH ((may change)				TL coaches SG+LHB = 155 nos, AC Coaches SG+LHB = 72	155	72	
11	POH (may change)				TL coaches SG+LHB =20+3= 23 nos, AC Coaches SG+LHB = 02 no	23	2	
12	ART /ARMV	RT-932886, RT-041415, RSV-97905, SPART- 13902, 13906, 13904 = 06 Coaches						
13	Loco Crane /BD	RT-002203, RSV-97907 = 02 Coaches			14. Parakh (Inspection Car) : 230051= 01			
15	Saloon	GM/CLW-072900 RAAC, DRM/ASN-904014 RA, GM/CLW 241124 RA (LHB) = 03 Coaches						
ANDAL								
1.	ART	RT-94921, RT-992263 & RT-002876 = 03 Coaches						
MADHUPUR								
1.	03521/22/23/24/25/26/27/28	MDP-GRD Pgr.	Daily	01 (ICF)	GSLR-02, GS-06	08	--	
2.	03603/04	MDP-GRD Pgr.	Daily (Except Thu)	01 (ICF)	GSLR-02, GS-06	08	--	
TOTAL			SG TL = 113 Nos LHB TL = 42 Nos SG AC = 11 Nos LHB AC = 60 Nos (ART/ASN+ Loco Crane+ Saloon + Parakh + ART/UDL) (6+2+3+ 1+3) = 15					Total 226+15= 241

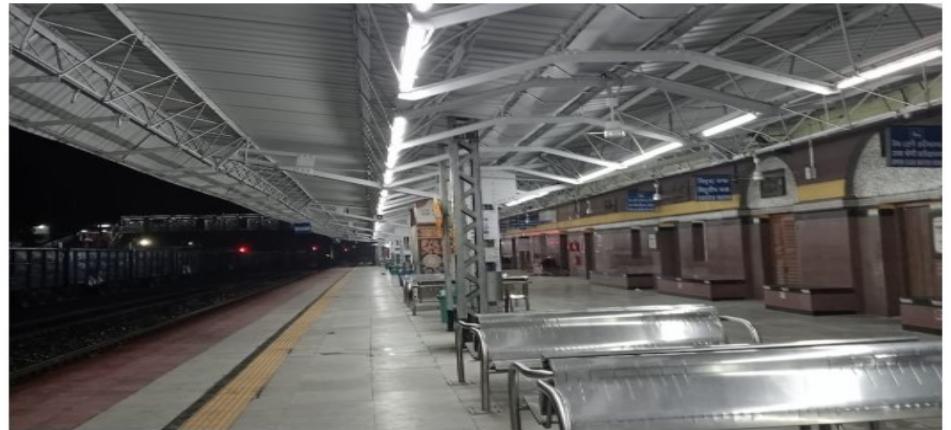
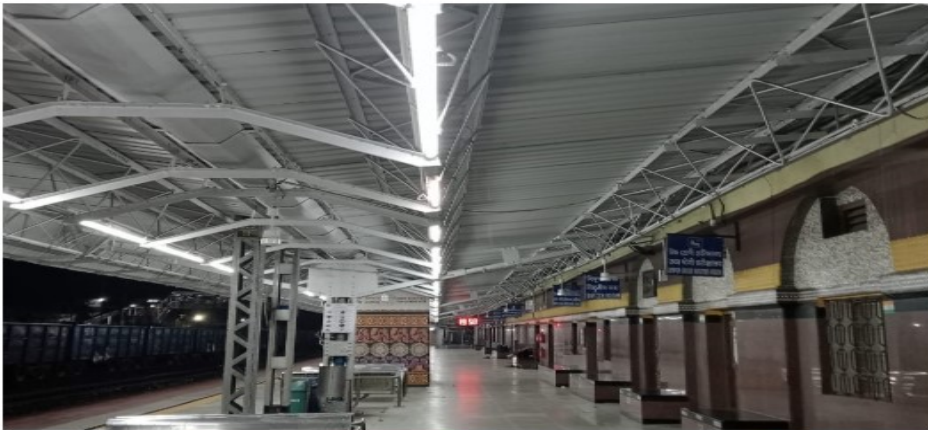
Position of Secondary Train along with Coach Composition at Asansol Division

Secondary

ASANSOL							
Sl. No.	Train No.	Train Name	Days of Runs	Nos. of Rakes	Capacity of Rake	Total	
						TL	AC
1.	12341/42	ASN-HWH-Agnibina	Daily	04 (LHB)	LWSCZ -06, LWS-08, LSLRD-01, ACCZ -02, Power Car-01 = 18×4 = 72 Coaches	60	12
2.	12942/41	ASN-PNME (Weekly)	Every Thu	01 (LHB)	AC 3T-06, AC 2T-02, Power Car-01, LWSCN-08, LWS-04, LSLRD -01	13	9
3.	17321/22	JSME-VSG (Weekly)	Every Mon	01 (LHB)	AC 2T-04, AC 3T-04, ECO.3T-03, Power Car-02, Pantry-01, LWS -06, LWSCN-02	8	14
4.	11427/28	JSME-PUNE (Weekly)	Every Sun	01 (LHB)	LWACCW-01, LWACCN-05, Power Car-01, LWSCN-09, LWS-03, LSLRD-01	13	7
5.	19435/36	ASN-ADI (Weekly)	Every Sat	01 (LHB)	LWACCW-02, LWACCN-08, Power Car-01, Pantry-01, LWSCN-06, LWS-03, LSLRD-01	10	12
MADHUPUR							
1.	12236/35	MDP-ANVR (Weekly)	Every Fri	01(LHB)	LWACCN-16, Power Car -02, LWSCN-02,LWACCNE-01	02	19
2.	22460/59	MDP-ANVR (Weekly)	Every Thu	01 (LHB)	LWACCN-16, Power Car -02, LWSCN-02 ,LWACCNE-01	02	19
3.	22466/65	MDP-ANVR (Weekly)	Every Tue	01(LHB)	LWACCN-03, LWACCW-01, Power Car -01, LWSCN-09, LWS-04, LSLRD-01,LWRRM-01	12	08
DEOGHAR							
1.	15625/26	DGHR-AGTL (Weekly)	Every Mon	01 (ICF)	AC 3T -05, WGSCN-10, GS-03, SLRD-02	15	05
2.	03509	DGHR-DBRG	Every Fri	01 (LHB)	LSLRD -01, LWS -04, LWSCN -05, LWACCW-01, LWACCN -06, LWLRRM -01	10	08
3.	13045/46	HWH-DGHR Mayurakshi Exp.	Daily	01 (ICF)	WGSCZ-01,GS-10, SLRD-02	13	--
4.	22500/22499	Vande Bharat Exp.	Mon,Wed ,Thu,Fri, Sat,Sun	-	-	-	08
DUMKA							
1.	13319/20	DMK-RNC	Daily	01 (ICF)	WGSCZAC-01, WGSCZ-07, GS-07, GSLRD-02	16	01
TOTAL					SG TL = 53 nos LHB TL = 130 nos SG AC = 08 nos LHB AC = 101 nos	292	



SITARAMPUR STATION



BARAKAR STATION



ILLUMINATION OF MADHUPUR STATION



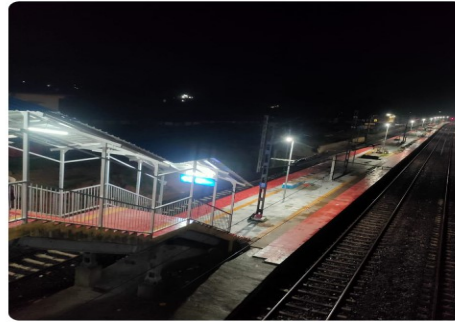
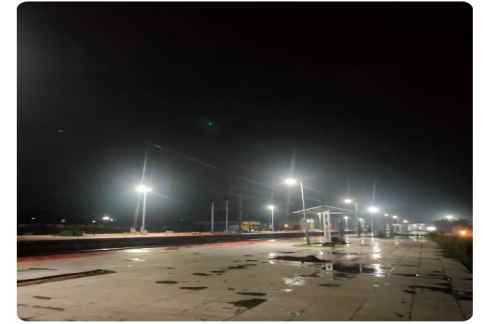
MADHUPUR STATION



COACHING & PIT LINE AT MADHUPUR



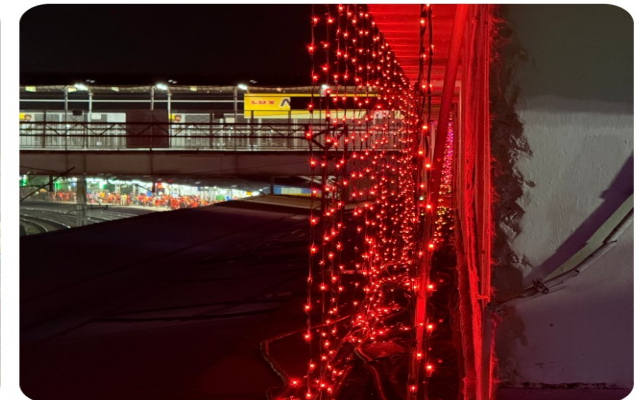
NEW COACHING COMPLEX MADHUPUR



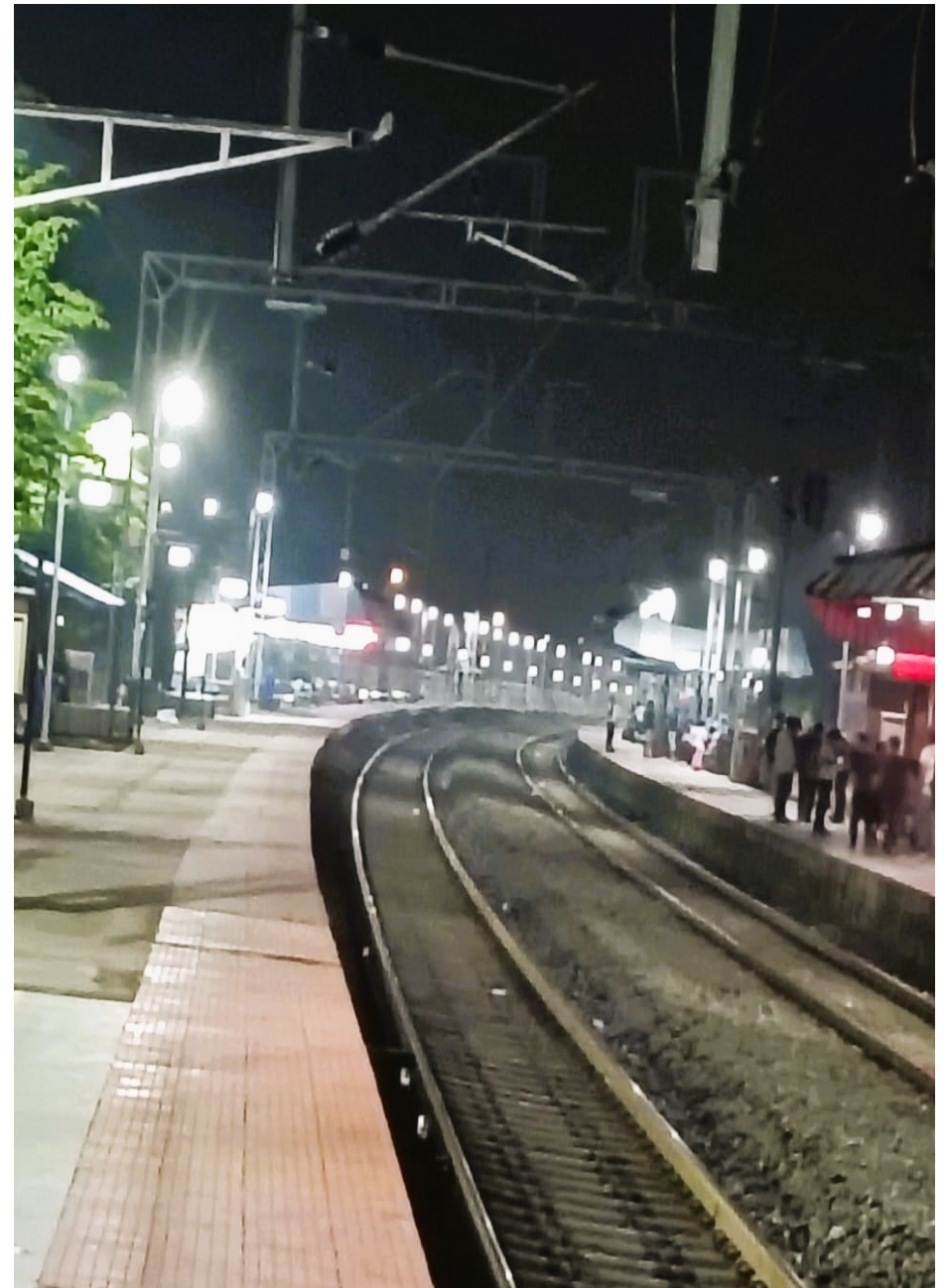
SHANKARPUR STATAION



JASIDIH STATION



LIGHTING ARRANGEMENT FOR ANNUAL SHRAVANI MELA AT JASIDIH



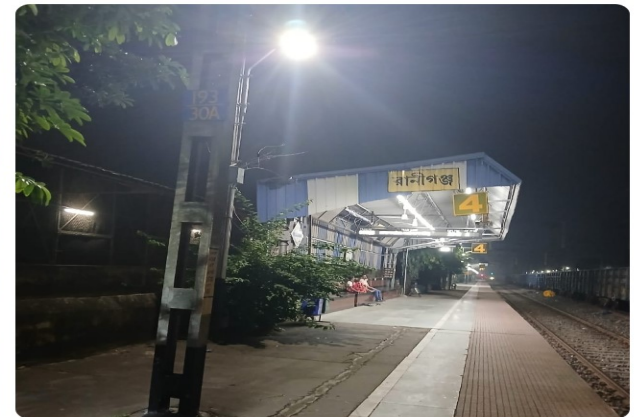
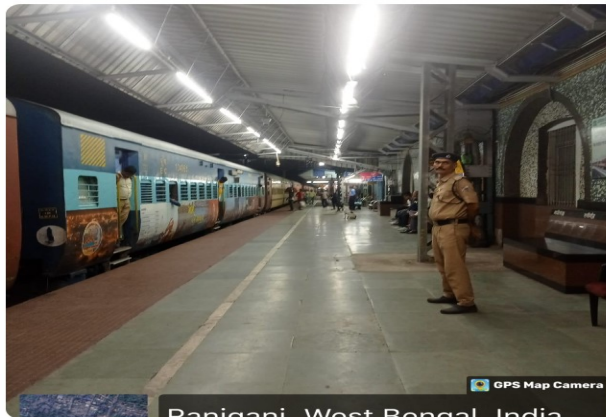
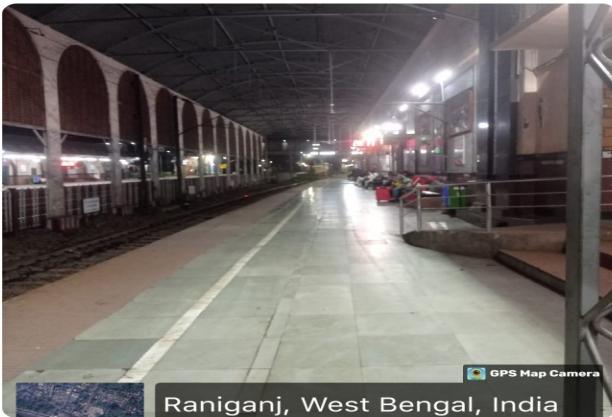
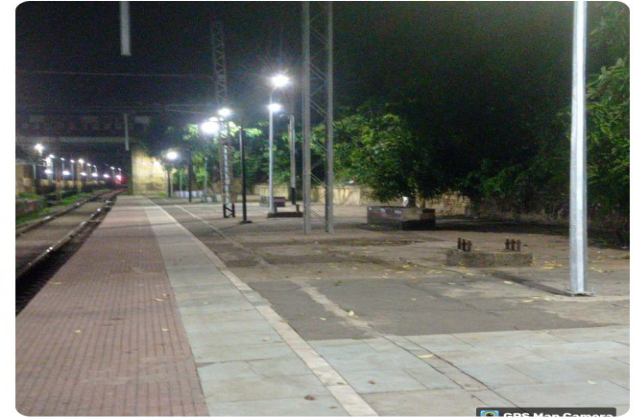
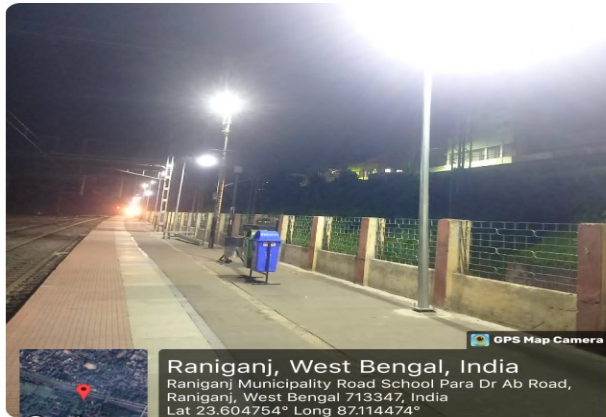
ILLUMINATED STATION AND PLATFORMS OF KUMARDUBI



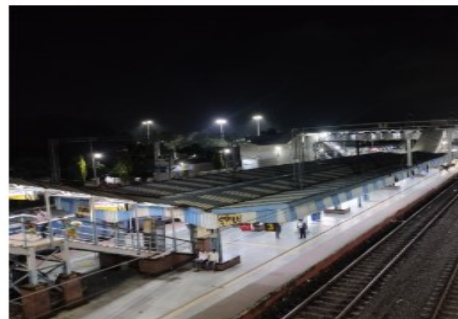
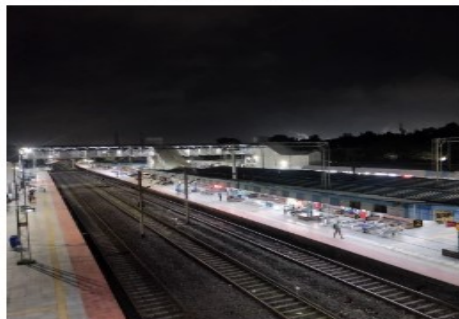
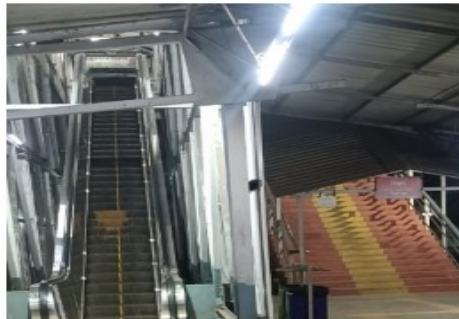
MUGMA STATION



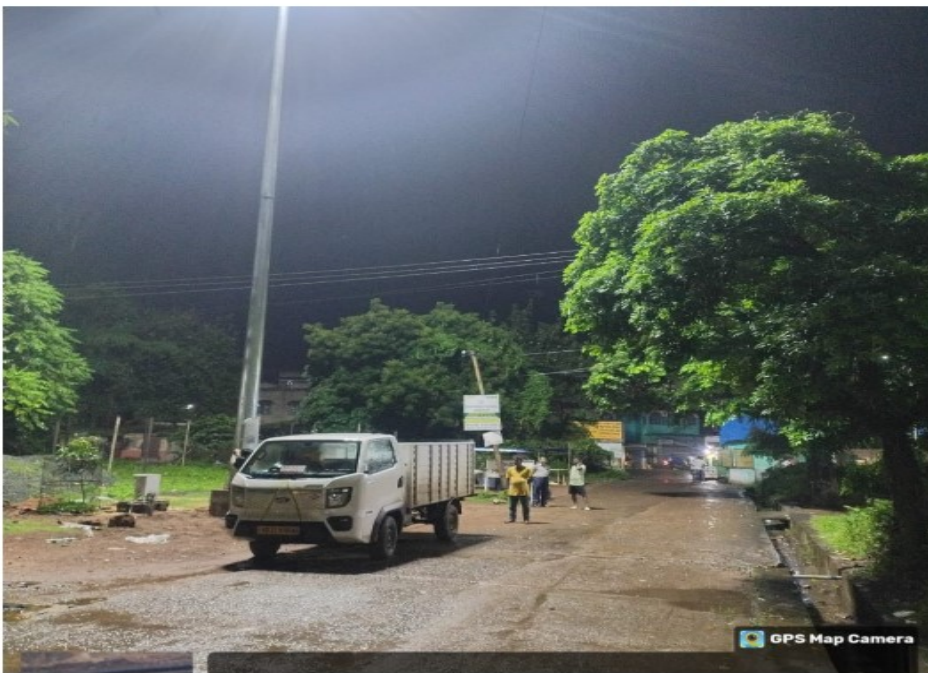
ANDAL STATION



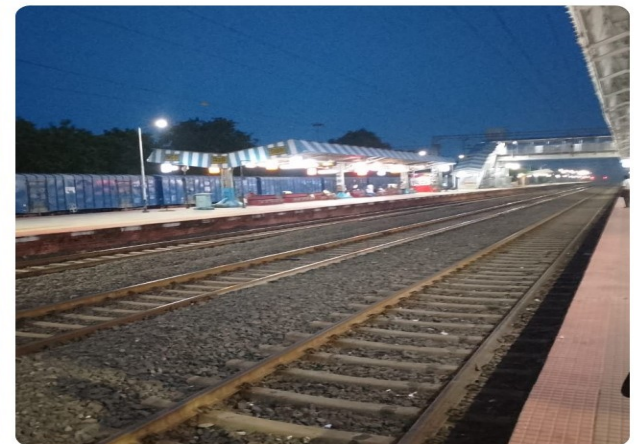
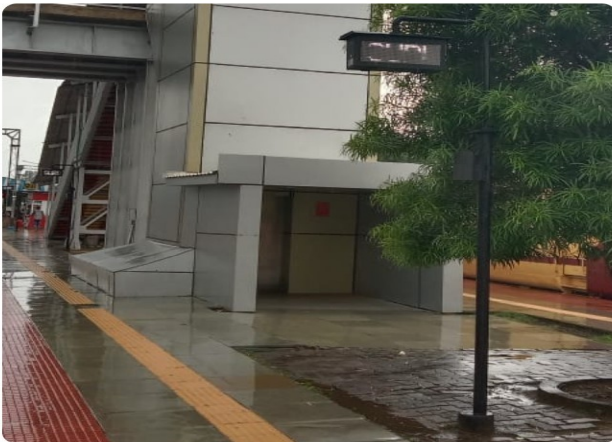
RANIGANJ STATION



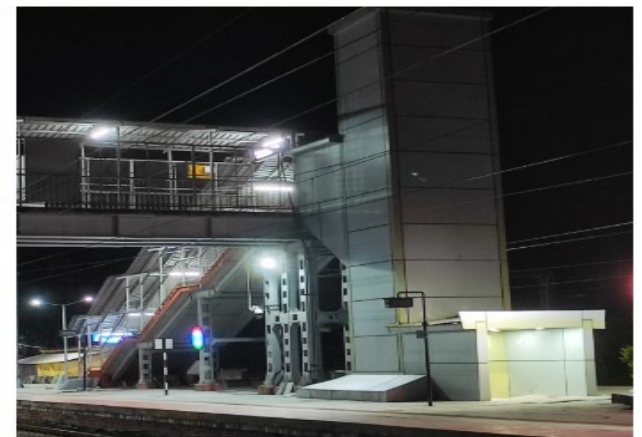
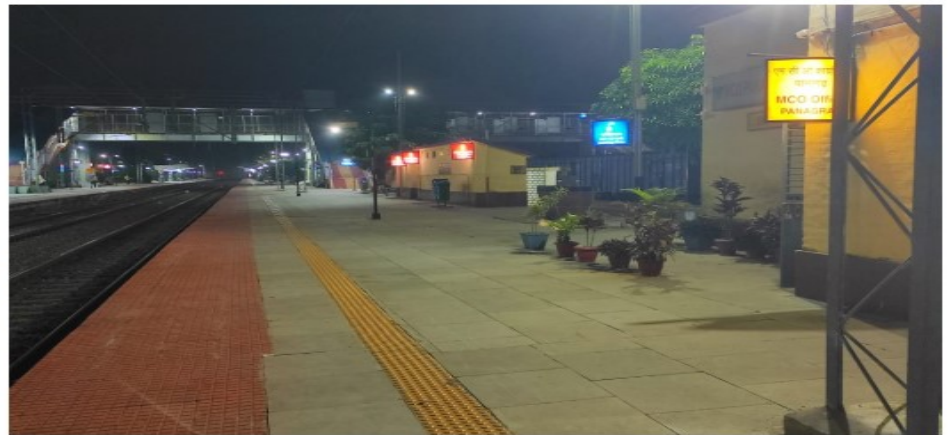
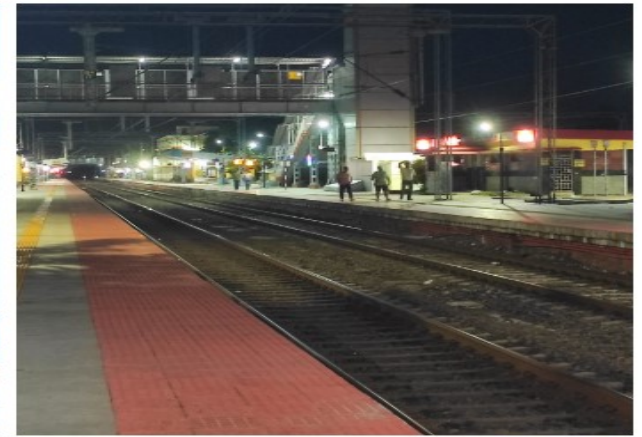
DURGAPUR STATION



HIGH MAST TOWER WORK AT ANDAL YARD



SURI STATION



PANAGARH STATION