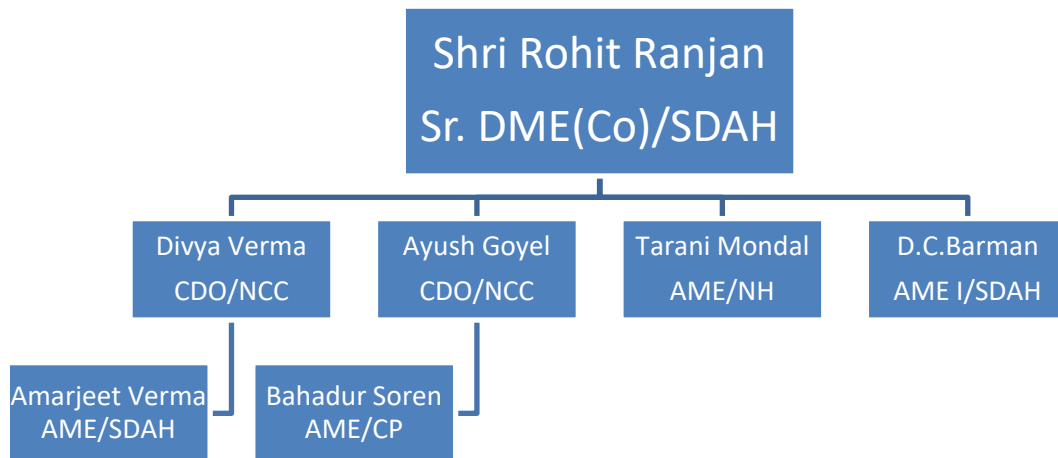


## ORGANIZATION CHART



### **Sr. DME(Co)/SDAH**

Overall, In-Charge of Carriage & Wagon wing for carrying out prescribed integrated maintenance of coaches and in charge of ART/BGA & ART/RHA

### **CDO/NCC**

Coaching Depot Officer of New Coaching Complex Depot/Sealdah and looks after total operation of the depot and Sealdah Platform mail/express operation

### **AME/NCC/SDAH**

Ensure integrated maintenance of Sealdah. Implement directives of Sr. DME/SDAH given from time to time and give him feedback. Ensure Mechanized Laundry & Bio- Toilet Laboratory activities. Carry out all other work as and when assigned by Sr. DME.

### **CDO/NCC**

Coaching Depot Officer of New Coaching Complex Depot/Sealdah and looks after total operation of the depot and Sealdah Platform mail/express operation

### **AME/C&W/KOAA**

Ensure integrated maintenance of KOAA depot coaching stock. Implement directives of Sr. DME/SDAH given from time to time and give him feedback. Ensure Mechanized Laundry. Carry out all other work as and when assigned by Sr. DME (Co).

### **AME-I/C&W/SDAH**

Ensure work related to PH 41, PH 42, ART and Carry out all other work as and when assigned by Sr. DME (Co).

### **AME/NH**

Ensure integrated maintenance of NH, RHA, BGB& MJT depot Wagon stock. Implement directives of Sr.DME/SDAH given from time to time and give him feedback. Carry out all other work as and when assigned by Sr.DME.

### **Sr .DEnHM/SDAH**

In-Charge of Environment & Housekeeping Management Wing. Monitoring and coordination functions for all environment related issues and planning, sanction and execution of environment related works.

### **AEnHM/SDAH**

Assisting Sr.DEnHM in Environment & Housekeeping Management Wing