



**Environment &
Housekeeping Management
Eastern Railway, Sealdah**



Greener Future Starts Today



Reduce Reuse Recycle

Reduce Waste and Pollution ✓

Minimize non-bio degradable waste and keep the station area clean by waste segregation at source

Reuse & Recycle of Natural Resources ✓

Use solar energy, Rain water harvesting, and STP & ETP for sustainable development of station

Support Biodiversity ✓

Protect ecosystems and wildlife by maintaining a balanced natural habitat. through gardening & plantation in circulating area of station.

About Us

EnHM/ SDAH Deptt., we are dedicated to promoting sustainable living and environmental awareness. Our mission is to inspire communities to adopt eco-friendly habits, reduce waste, and protect natural resources. Through education, events, and green initiatives, we strive to create a cleaner, healthier railway station for future generations.

🌐 Support us on:
greencellsealdah@gmail.com

Glimpse of Different Day to day activities of EnHM/SDAH



Installation of Plastic Bottle Crushing Machine



Plastic Bottle Crushing Machine installation through CSR project



World Earth day celebration at various location of SDAH Division



On the occasion of World Environment day, to spread awareness among passengers and employees about the Importance of environment in human life, “Mission Life” event is being successfully observed.



Creation of Green patch at various railway vacant land



Plantation at various railway premises



Every year on the occasion of Swachhta Pakhwara mass participation of NGO's, Collage students as well as railway employees conducted to spread awareness regarding cleanliness at railway stations.



Massive cleanliness activity and awareness programme conducted over SDAH Division on the occasion of "Swachhta Hi Seva"



Meri Life Events have has been observed all over Sealdah Division to spread awareness among passengers, railway employees and daily commuters regarding 'plant trees to reduce the impact of pollution', 'stop use of single use plastic', 'use cloth bags instead of plastic bags', 'reduce waste', 'save energy', 'use LED Bulbs/Tube-lights', 'save water', 'dispose e-waste wisely' 'Afforestation' etc.

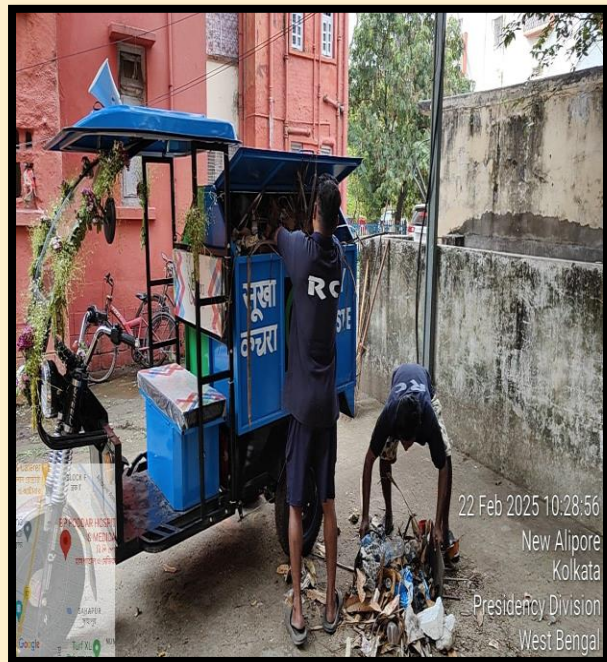


Provision of 'Plastic Only Bins' with "RED" colure coding at Stations and Other Railway Establishments

Provision of Twin bin Dustbin awareness with Safai Mitra for segregation of waste at source.

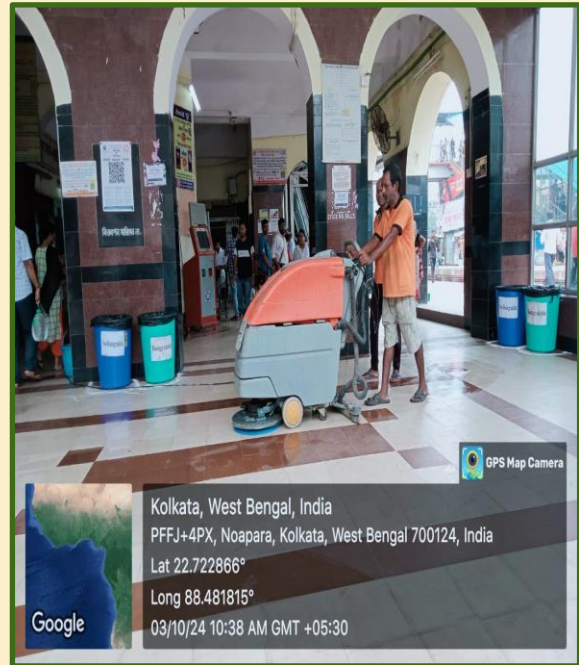


Door to Door waste collection at various colonies

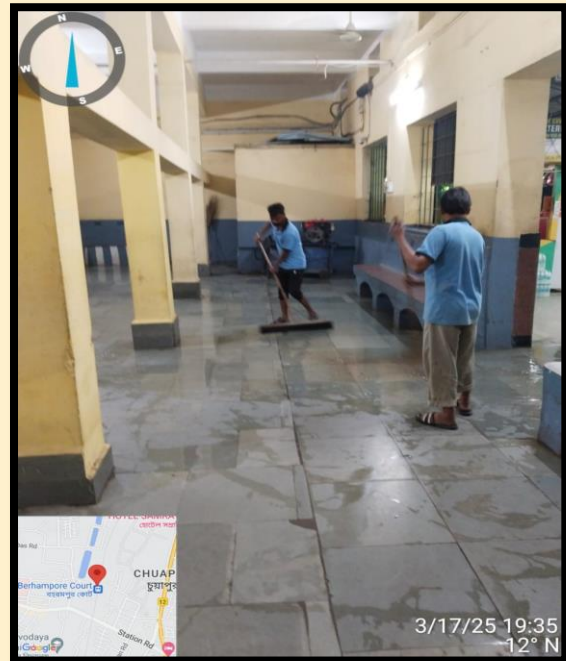


Door to Door waste collection and segregation at source at various colonies by battery operated vehicle.

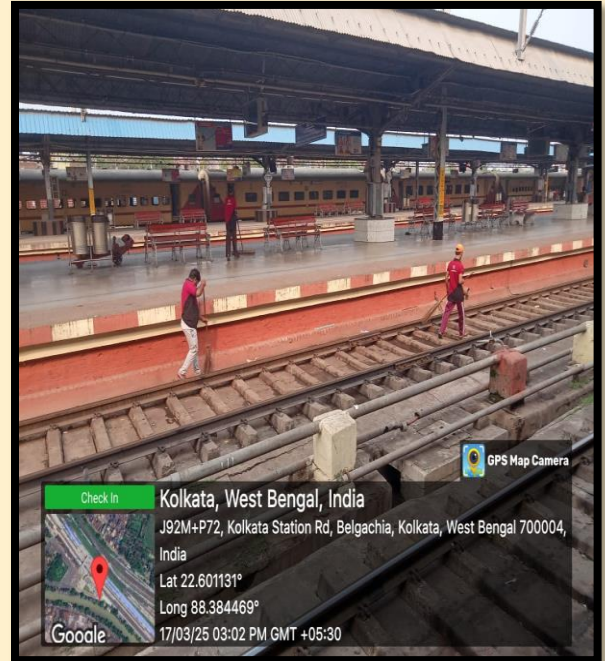
Station Cleaning Activities.



Intensive cleaning of Platforms



Intensive cleaning of stairs & concurs area



Intensive cleaning of Railway tracks



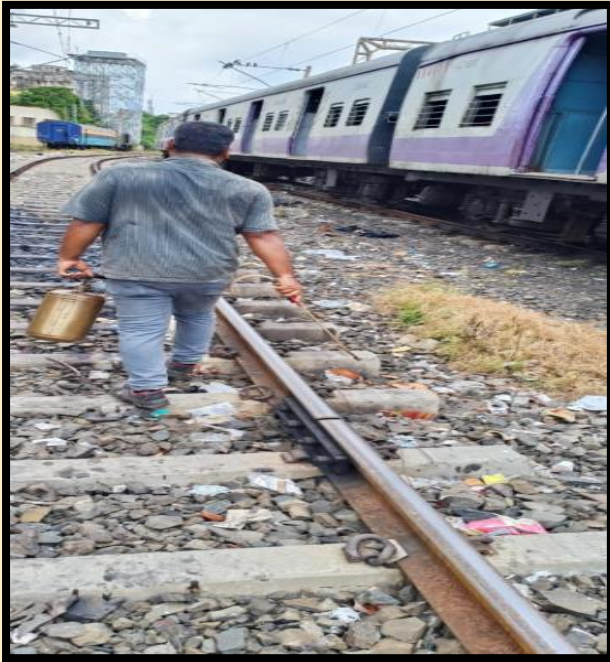
Cleaning of Drains.

Colony Cleaning



Drain cleaning in various colonies for pre-Monsoon activity.

Fogging & fumigation



Pre-monsoon Fogging & fumigation to vector & rodent control

Material Recovery Facility



Bio degradable waste processing Plant



Plastic waste processing Plant